

THE DAY FEDERAL DATA WENT DARK A YEAR OF MONITORING AND ACTION

JANUARY 29, 2026

COHOSTED BY

DATA INDEX . US



AMERICAN STATISTICAL ASSOCIATION • CDC DATA PROJECT • DATA RESCUE PROJECT •
DEMOCRACY 2025 • ESSENTIALDATA.US • FEDERATION OF AMERICAN SCIENTISTS •
FRIENDS OF BLS • THE LEADERSHIP CONFERENCE EDUCATION FUND • MOVEMENT
ADVANCEMENT PROJECT • POPULATION ASSOCIATION OF AMERICA • POPULATION
REFERENCE BUREAU • PUBLIC ENVIRONMENTAL DATA PARTNERS



America's Essential Data

FAS

**FEDERATION
OF AMERICAN
SCIENTISTS**

EssentialData.US – Use Cases of Federal Datasets



Federal datasets are essential infrastructure for American lives and livelihoods

er
ca's agriculture
53 billion every

Residents of a neighborhood with no grocery stores now have easy access to fresh, healthy foods because city planners used the [Food Access Research Atlas dataset](#) to establish a farmer's market in their neighborhood.

People living in wildfire-prone areas get near real-time access to [satellite imagery](#) to help them make decisions about evacuation routes.

Americans' Social Security benefits are better protected from harmful policy changes because researchers use [SSA beneficiary statistics from the Annual Statistical Supplement](#) to accurately model the costs and impacts of proposed legislative reforms.

American
(CS) data
income
the right
sales.

CENSU

it was

\$ economic data USDA

virior
data

\$ economic data SSA menta

on data ED alt

consumer data

g data CENSUS

Use Case Repository

Search all columns:

Use Case

Primary Agency

Collecting Agency

Data Type

All Agencies

All Collecting Agencies

All Data Types

A child is not exposed to cancer-causing radon when she plays in the basement because the [EPA Map of Radon Zones](#) prompted local building codes for radon-resistant new construction.

EPA

health data

An eczema patient uses [EPA's Safer Choice data](#) to find fragrance-free household products without chemical ingredients that can irritate their skin (or harm the environment).

EPA

consumer data

A resident avoids a new scam in their community because local law enforcement used [federal Consumer Sentinel data](#) to spot the pattern and send out an alert.

FTC

consumer data

During a remodel, a homeowner uses [EPA's Energy Star product data](#) to select appliances that cut energy bills and qualify for rebates.

EPA

consumer data

A second-hand store reviews [Consumer Product Safety Commission recall data](#) before offering items for sale, reducing the chance of shoppers being harmed by unsafe products.

CPSC

consumer data

A new parent reviews federal safety data on [SaferProducts.gov](#) to ensure the crib handed down to them is safe for their baby to use.

CPSC

consumer data

EssentialData.US – Social Media Campaigns

FAS 04

03

02

01

5 surprising ways federal data make your life better

America's Essential Data

five ways

federal datasets

support

student success

FAS America's Essential Data

federal datasets save lives

suicide awareness month

FAS America's Essential Data

4 ways federal data supports student success beyond K-12

America's Essential Data

federal datasets for

National Disability Employment Awareness Month

that keep disabled Americans going

DISABILITY HEALTH EQUITY RESEARCH NETWORK

FAS America's Essential Data

Dearly Departed Datasets

FEDERAL DATA

d.2025

On this All Hallows' Eve, let us recognize the losses of datasets that served the American people

How Federal Data Helps America's Neighborhoods

FAS America's Essential Data

federal data we're thankful for

FAS America's Essential Data apdu

THANK YOU

THANK YOU

THANK YOU

THANK YOU

THANK YOU

THANK YOU

8 ways federal data makes shopping not suck

FAS America's Essential Data

ASA ®

AMERICAN STATISTICAL ASSOCIATION
Promoting the Practice and Profession of Statistics®

American Statistical Association

- Focus: ensure the federal statistical agencies have the resources they need to do their job effectively and efficiently
- Activities:

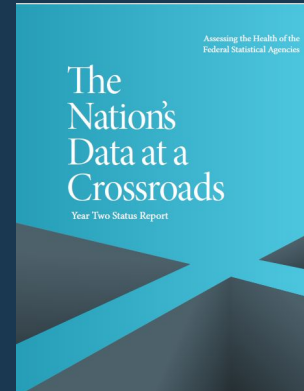
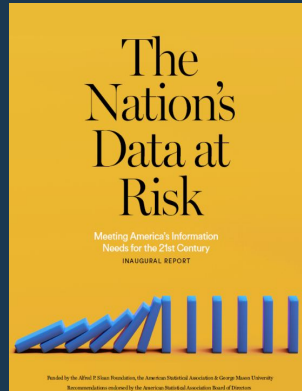
<ul style="list-style-type: none">○ Project teams○ Meetings with Hill and Administration○ Injection of statistical viewpoint	<ul style="list-style-type: none">○ Blue Ribbon panels○ Reports○ Expert convenings○ Media Outreach, ...
--	--
- 2025-2026 Projects (in addition to continued advocacy)
 - Assessing and Monitoring the Health of the Federal Statistical Agencies
 - Modernization of the Federal Statistical Agencies
 - Reimagining the National Center for Education Statistics

American Statistical Association

The “FedStat Health” Project

- Starting Fourth Year (We want your input: <https://bit.ly/FedStatInput2025>)
- 2026 will include:
 - Ongoing Monitoring
 - Citizen Science Project
 - AmeriSpeak Survey

<https://bit.ly/FedStatHealth>



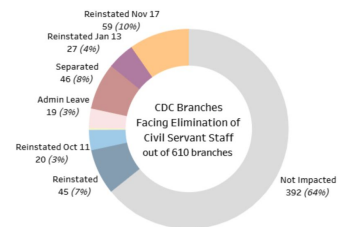
nphe
NATIONAL PUBLIC HEALTH COALITION

CDC
DATA PROJECT

CDC Data Project

- Established in response to a lack of information and transparency from CDC and HHS (launched in June 2025)
- Initial data collection and development of the first CDC data report
- Crafting a system for data collection, monitoring and updating products
- Since first launching, the project has grown to include three dashboards:
 - Budget Dashboard
 - RIFs Dashboard
 - Grants Dashboard

The CDC has lost 1 in 4 of its civil service workforce since January 2024, with many CDC branches (units) facing complete elimination.



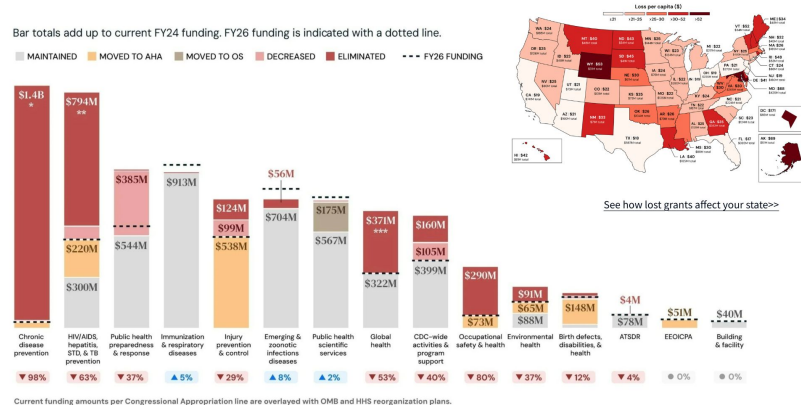
Explore the Budget Dashboard

Explore the RIFs Dashboard

Explore the Grants Dashboard

How will current Center-level funding be impacted?

Lost grants hurt states and local communities.



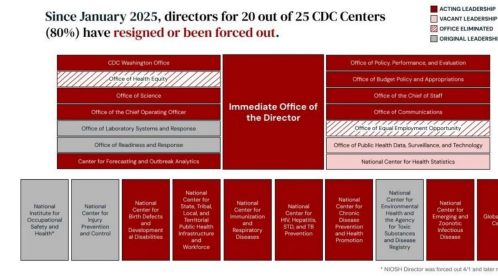
CDC Data Project

From Data to Action

- Over 30K unique website viewers
- Use of data to develop communications and public-facing projects
 - Strategic use of social media
- Fostering of relationship with traditional media and journalists to provide a reliable source of information
- Working closely with congressional members across the spectrum:
 - State impact discussions
 - Hill day education
 - Preparation for committee hearings

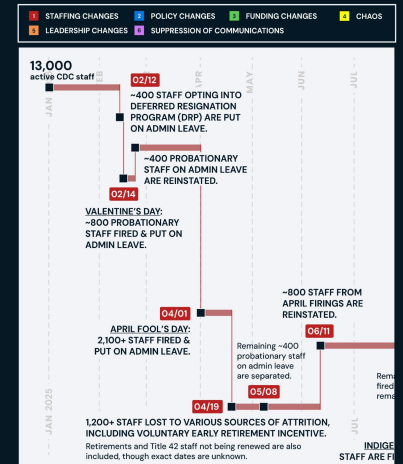
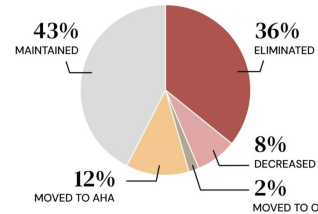
Leadership Changes at the CDC

Since January 2025, directors for 20 out of 25 CDC Centers (80%) have resigned or been forced out.



Most programs will not be moved to AHA.

Some programs are expected to move to the **Administration for a Healthy America (AHA)** or the **Office of the Secretary (OS)**, but there is no plan to transition ongoing work.





FRIENDS OF BLS

Friends of BLS

- **Founded in 2014 to support BLS as an institution that provides critical data and tools to a wide variety of users for a wide variety of purposes.**

Co-Chairs:

- **Bill Beach, BLS Commissioner 2019-2023**
- **Erica Groshen, BLS Commissioner 2013-2017**
- **Paul Schroeder, COPAFS**

Steering Committee

- **Tom Beers, NABE**
- **Mary Jo Mitchell, PAA**
- **Demetra Nightingale, Urban Institute**
- **Steve Pierson, ASA**
- **Ken Poole, CREC**
- **Aaron Sojourner, Upjohn Institute**

Friends of BLS

2025-2026 Timeline

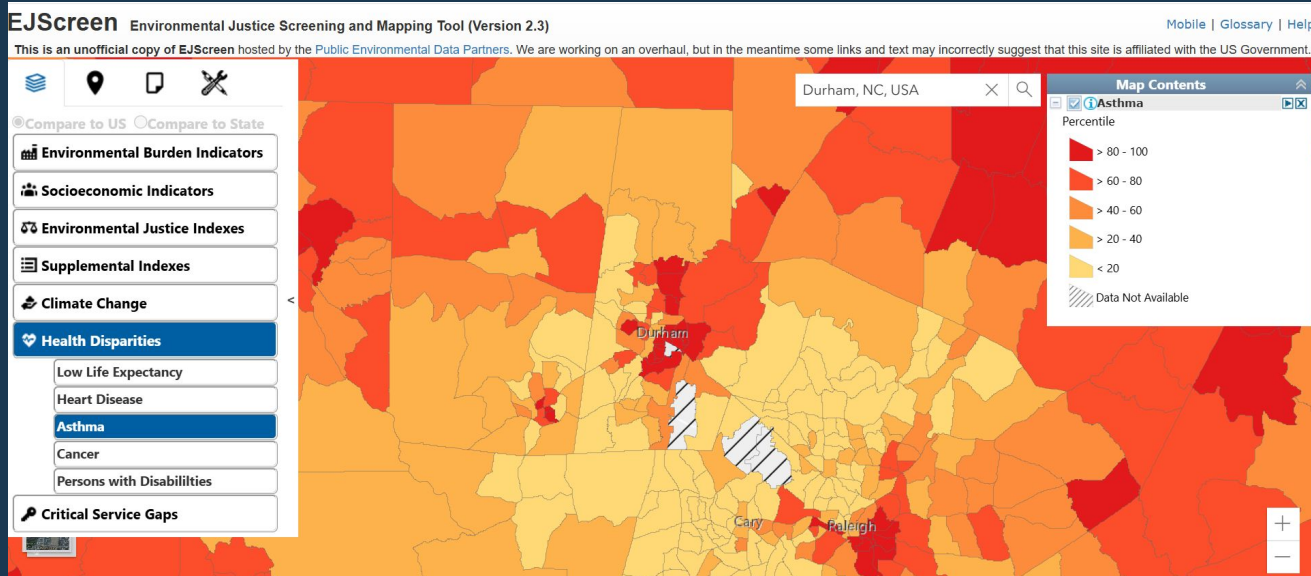
- Jun 9 – BLS announces cuts to most restricted data access
- **Aug 1 – Commissioner McEntarfer removed**
- Aug 13 – A.J. Antoni nominated to be next BLS Commissioner
- Sep 23 – CE 2024 Data Release is rescheduled
- Sep 30 – White House withdraws A.J. Antoni's nomination
- Dec 31 – November 2025 CPI Estimates
- Jan 8 – Trump posts charts with Jobs Day data prior to public release



**Public
Environmental
Data Partners**

Public Environmental Data Partners

- Archived ~400 federal climate and environmental datasets
- Rebuilt 6 federal environmental and climate justice tools



Source: PEDP's public version of EPA's EJScreen



The Leadership Conference
Education Fund

The Leadership Conference on Civil and Human Rights

What we did:

- Solicited input on important datasets
- Convened people on the importance of R&E Data collection
 - set up working groups on the same
- Continue to work on implementation of SPD15
 - federally
 - state and local

What are are doing:

- Engaging our Data Disaggregation Action Network
 - Identifying barriers to implementation at state and local level
- Looking to inform the public on the needs and uses of R&E data collection
- Continue to protect and uphold the need for data integrity and quality in the decennial census and ACS with fair and accurate counts

The Leadership Conference on Civil and Human Rights

D-DAN:

- 5 National Partners; 3+ State Partners, 352 Listserv
- Monthly convenings; public webinars and trainings; Disaggregation Nation Report Updates; Messaging and communications



Responding to threats:

- Research
- Public Campaign & Education
- Counter Action/Counter Legislation
- Litigation
- Mitigation

M A P

movement advancement project ▶

Movement Advancement Project

- [Executive Order 14168](#) implementation and implications
 - SOGI measures removed from [hundreds](#) of federal data collection instruments
 -  Methodological research halted (e.g. American Community Survey)
 -  [Litigation underway](#)

Movement Advancement Project

- Ongoing work by MAP:



Supporting monitoring and preservation



Engaging in accountability efforts (e.g., [public comments](#))



Promoting good SOGI data governance at the state level



Conducting community-engaged research



POPULATION ASSOCIATION OF AMERICA

Population Association of America

In response to January 2025 removal of federal data, data products, and websites, PAA took following actions:

- **Spearheaded letter to Congress** signed by 230 national, state, and local organizations and 2,600 individuals representing data users, nationwide urging the restoration of taxpayer financed data removed from federal agency websites.
- Created **confidential portal** to capture “stories” from PAA members.
- **Issued PAA action alert** that generated 455 messages to members of Congress, urging restoration of data.
- **Issued press release and provided and/or arranged background interviews** to reporters at Politico, New York Times, Associated Press, and National Public Radio.
- **Sponsored two briefings for the Government Accountability Office** on disappearing federal data.
- **Responded to congressional inquiries** from oversight and funding committee staff in House and Senate.

Population Association of America

Working independently and with coalition partners PAA is:

- **Continuing to Advocate for Restoration of Federal Data**
 - Led [letter](#) to Congress signed by 36 organizations and 400 individuals urging restoration of CPS FSS.
 - PAA member Dr Colleen Heflin [placed op-ed](#) in *The Hill* newspaper, October 2025.
- **Protecting the Federal Workforce and Federal Statistical Agencies**
 - Advocated for restoration of statistical agency staff affected by government shutdown.
 - Will continue advocating for robust funding to support federal statistical agencies.
- **Supporting Ongoing Efforts to Strengthen Federal Statistical System**

DEMOCRACY 2025

Democracy 2025

Press Release

Court Orders IRS to Stop Sharing Confidential Taxpayer Information with Immigration and Customs Enforcement

Decision Follows Preliminary Ruling in September, Marks Major Victory for Taxpayers' Privacy

<https://democracyforward.org/news/press-releases/court-orders-irs-to-stop-sharing-confidential-taxpayer-information-with-immigration-and-customs-enforcement/>

Democracy 2025

650+

Democracy 2025 partner
organizations

70%

of legal cases filed against
Trump-Vance administration
actions filed by Democracy 2025
members

516

affirmative legal challenges to
harmful or unlawful federal
actions tracked

226

litigation victories secured for
people and communities by
Democracy 2025 members

<https://www.democracy2025.org/join>



Data Rescue Project



International Association for Social Science
Information Service & Technology



RDAP
ASSOCIATION

**DATA
CURATION
NETWORK**

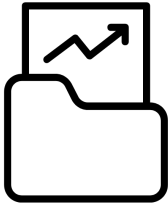
Our mission

The Data Rescue Project serves as a lifeboat for at-risk US Governmental Datasets. Our dedicated steering committee and community of volunteers work towards the **continued and robust accessibility** of these at-risk datasets.

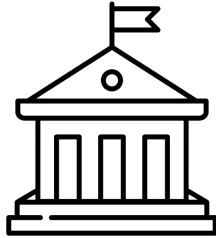


**Data Rescue
Project**

The DRP at a Glance



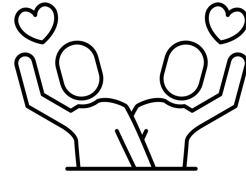
**1700+ rescued
datasets**



**90+ at-risk
gov't offices
covered**



**Hundreds of
Terabytes of
mirrored data**

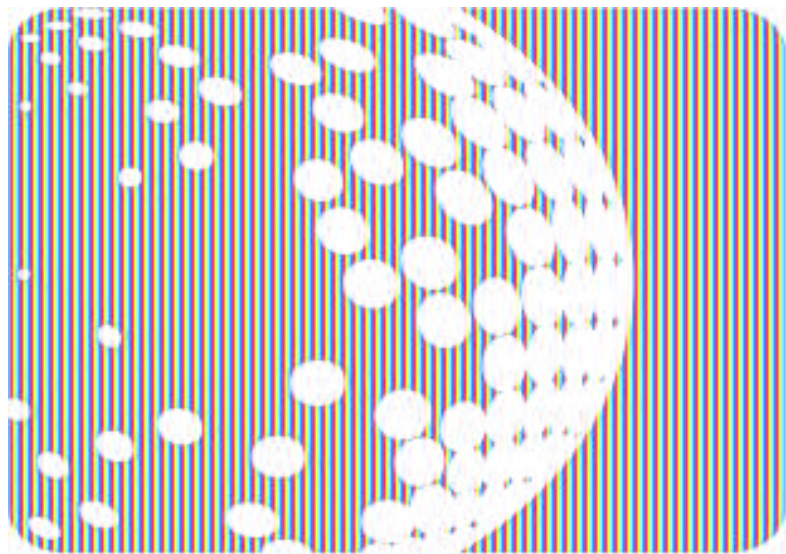


**500+
volunteers**

www.datarescueproject.org/



bsky.app/profile/datarescueproject.org



PR



- A safe space for public data stakeholders to share threats, workarounds, and ways to help when federal data aren't available
- 700+ members
- Discussion forum and monthly blogs
- New AI search
- Future home of the ACS Online Community (sunset September 2025)
- Join at federaldataforum.prb.org
- Thank you to our sponsors!




All posts I can see
Most Replies
25 per page
[Post New Message](#)

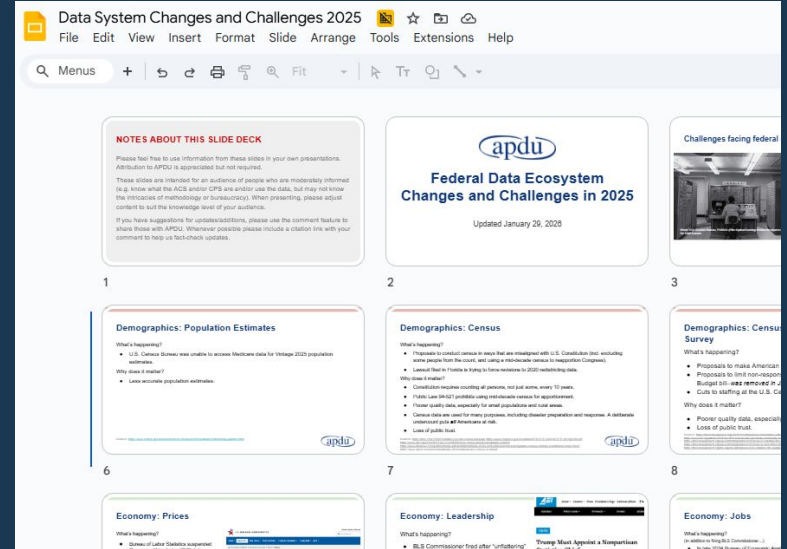
Thread Subject	Replies	Last Post	Community
Introduce Yourself Here	44	11:20:2025 by Mary Bach-Jackson Original post by Celena Mijares	Federal Data Users
Shift from CIPSEA to ESRA for 2026 NAEP? NCES	11	05:19:2025 by Kate Tromble Original post by Corinna Turbes	Federal Data Users
Age Adjusted Death Rates at the County level CDC	7	10:14:2025 by Stas Kolenikov Original post by Danielle Walters	Federal Data Users
Tracking Education Data Changes	7	07:21:2025 by Nikki Churchwell	Federal Data Users
L'ving Love Stats Social Media Idea	6	10:18:2025 by Claire Bowen	Federal Data Users
data.census.gov not showing tables in results Census	6	10:15:2025 by Grigoris Argeros Original post by Diana Canzoneri	Federal Data Users
Effect of a shutdown on federal statistics	6	10:01:2025 by David Dorer Original post by Mark Mather	Federal Data Users
The Data We Take for Granted: Telling the Story of How Federal Data Benefits American Lives and Livelihoods Take Action	6	06:26:2025 by Denice Ross	Federal Data Users
Access to Census Bureau FTP Census	5	10:25:2025 by David Dorer Original post by Glenn Rice	Federal Data Users
Public comment on national SNAP fraud database. (due July 23) Take Action		07:24:2025 by Margo Anderson Original post by Eric Giannella	Federal Data Users
CDC issues 15 calls for comment CDC Take Action	5	07:10:2025 by John Kubale Original post by Beth Jarosz	Federal Data Users

apdu

Association of Public Data Users

APDU hosted Town Halls, an unConference, and Data User summits to understand data users' most pressing concerns & identified a lanes of action that needed attention:

- Communications “outside the beltway”
 - Open-access, frequently-updated slide deck
 - “State of data” briefings
 - Rapid Response Data Briefings—in collaboration with partners
- Privacy
 - New initiative to increase understanding of data privacy



Association of Public Data Users

What you can do:

- Sign up for newsletter <https://tinyurl.com/apdunews>
- Attend a Rapid Response data briefing
- Use the slide deck: <https://tinyurl.com/DataChallengesSlideDeck>
- Reach out for a “state of data” briefing (info@apdu.org)

DATA INDEX . US

dataindex.us – Monitoring Federal Data

Take Action – 450 comment opportunities showcased

- Highlighting opportunities for public comment on federal forms and surveys

Change Requests – 422 (and counting) Presidential Action-driven changes identified

- Scraping all ICRs and identifying changes driven by Presidential Actions

Rapid Response Data Briefings – 100s of comments submitted

- Mobilizing public engagement for at-risk data collections

Data Checkup – 6 dimensions for assessing risk developed

- Conducting health checks for federal data collections

dataindex.us – Data Checkup

<p>Current Employment Statistics (CES) See more</p> <p>Data Checkup <i>Last updated: 2025-12-16</i></p> <table border="1"> <tr> <td>Historical Data Availability No Known Issue</td> <td>Future Data Availability High Risk</td> <td>Data Quality No Known Issue</td> </tr> <tr> <td>Statutory Context No Known Issue</td> <td>Resources High Risk</td> <td>Policy Moderate Risk</td> </tr> </table>	Historical Data Availability No Known Issue	Future Data Availability High Risk	Data Quality No Known Issue	Statutory Context No Known Issue	Resources High Risk	Policy Moderate Risk	<p>Federal Employment Viewpoint Survey (FEVS) See more</p> <p>Agency OPM</p> <p>Data Checkup <i>Last updated: 2026-01-28</i></p> <table border="1"> <tr> <td>Historical Data Availability No Known Issue</td> <td>Future Data Availability High Risk</td> <td>Data Quality High Risk</td> </tr> <tr> <td>Statutory Context No Known Issue</td> <td>Resources Moderate Risk</td> <td>Policy High Risk</td> </tr> </table>	Historical Data Availability No Known Issue	Future Data Availability High Risk	Data Quality High Risk	Statutory Context No Known Issue	Resources Moderate Risk	Policy High Risk	<p>Homeland Infrastructure Foundation-Level Data (HIFLD) Open See more</p> <p>Data Checkup <i>Last updated: 2025-12-16</i></p> <table border="1"> <tr> <td>Historical Data Availability Gone</td> <td>Future Data Availability Gone</td> <td>Data Quality Gone</td> </tr> <tr> <td>Statutory Context High Risk</td> <td>Resources Gone</td> <td>Policy Gone</td> </tr> </table>	Historical Data Availability Gone	Future Data Availability Gone	Data Quality Gone	Statutory Context High Risk	Resources Gone	Policy Gone
Historical Data Availability No Known Issue	Future Data Availability High Risk	Data Quality No Known Issue																		
Statutory Context No Known Issue	Resources High Risk	Policy Moderate Risk																		
Historical Data Availability No Known Issue	Future Data Availability High Risk	Data Quality High Risk																		
Statutory Context No Known Issue	Resources Moderate Risk	Policy High Risk																		
Historical Data Availability Gone	Future Data Availability Gone	Data Quality Gone																		
Statutory Context High Risk	Resources Gone	Policy Gone																		
<p>Medicare Current Beneficiary Survey (MCBS) See more</p> <p>ICRs 1 New</p> <p>Data Checkup <i>Last updated: 2025-12-16</i></p> <table border="1"> <tr> <td>Historical Data Availability No Known Issue</td> <td>Future Data Availability No Known Issue</td> <td>Data Quality No Known Issue</td> </tr> <tr> <td>Statutory Context Moderate Risk</td> <td>Resources High Risk</td> <td>Policy High Risk</td> </tr> </table>	Historical Data Availability No Known Issue	Future Data Availability No Known Issue	Data Quality No Known Issue	Statutory Context Moderate Risk	Resources High Risk	Policy High Risk	<p>NASS Peanut Prices See more</p> <p>Agency USDA, NASS</p> <p>ICRs 1 New</p> <p>Data Checkup <i>Last updated: 2026-01-28</i></p> <table border="1"> <tr> <td>Historical Data Availability No Known Issue</td> <td>Future Data Availability No Known Issue</td> <td>Data Quality No Known Issue</td> </tr> <tr> <td>Statutory Context Moderate Risk</td> <td>Resources High Risk</td> <td>Policy No Known Issue</td> </tr> </table>	Historical Data Availability No Known Issue	Future Data Availability No Known Issue	Data Quality No Known Issue	Statutory Context Moderate Risk	Resources High Risk	Policy No Known Issue	<p>National Assessment of Educational Progress (NAEP) See more</p> <p>Agency ED, IES, NCEES</p> <p>Data Checkup <i>Last updated: 2025-12-16</i></p> <table border="1"> <tr> <td>Historical Data Availability No Known Issue</td> <td>Future Data Availability No Known Issue</td> <td>Data Quality High Risk</td> </tr> <tr> <td>Statutory Context No Known Issue</td> <td>Resources High Risk</td> <td>Policy High Risk</td> </tr> </table>	Historical Data Availability No Known Issue	Future Data Availability No Known Issue	Data Quality High Risk	Statutory Context No Known Issue	Resources High Risk	Policy High Risk
Historical Data Availability No Known Issue	Future Data Availability No Known Issue	Data Quality No Known Issue																		
Statutory Context Moderate Risk	Resources High Risk	Policy High Risk																		
Historical Data Availability No Known Issue	Future Data Availability No Known Issue	Data Quality No Known Issue																		
Statutory Context Moderate Risk	Resources High Risk	Policy No Known Issue																		
Historical Data Availability No Known Issue	Future Data Availability No Known Issue	Data Quality High Risk																		
Statutory Context No Known Issue	Resources High Risk	Policy High Risk																		
<p>National Health Interview Survey (NHIS) See more</p> <p>Agency HHS, CDC, NCHS</p> <p>ICRs 1 New</p> <p>Data Checkup <i>Last updated: 2025-12-16</i></p> <table border="1"> <tr> <td>Historical Data Availability No Known Issue</td> <td>Future Data Availability High Risk</td> <td>Data Quality High Risk</td> </tr> <tr> <td>Statutory Context High Risk</td> <td>Resources High Risk</td> <td>Policy High Risk</td> </tr> </table>	Historical Data Availability No Known Issue	Future Data Availability High Risk	Data Quality High Risk	Statutory Context High Risk	Resources High Risk	Policy High Risk	<p>National Survey of Children's Health (NSCH) See more</p> <p>Data Checkup <i>Last updated: 2025-12-16</i></p> <table border="1"> <tr> <td>Historical Data Availability Moderate Risk</td> <td>Future Data Availability Moderate Risk</td> <td>Data Quality No Known Issue</td> </tr> <tr> <td>Statutory Context High Risk</td> <td>Resources High Risk</td> <td>Policy High Risk</td> </tr> </table>	Historical Data Availability Moderate Risk	Future Data Availability Moderate Risk	Data Quality No Known Issue	Statutory Context High Risk	Resources High Risk	Policy High Risk	<p>USAspending.gov See more</p> <p>Agency TREAS</p> <p>Data Checkup <i>Last updated: 2025-12-16</i></p> <table border="1"> <tr> <td>Historical Data Availability No Known Issue</td> <td>Future Data Availability No Known Issue</td> <td>Data Quality No Known Issue</td> </tr> <tr> <td>Statutory Context No Known Issue</td> <td>Resources High Risk</td> <td>Policy No Known Issue</td> </tr> </table>	Historical Data Availability No Known Issue	Future Data Availability No Known Issue	Data Quality No Known Issue	Statutory Context No Known Issue	Resources High Risk	Policy No Known Issue
Historical Data Availability No Known Issue	Future Data Availability High Risk	Data Quality High Risk																		
Statutory Context High Risk	Resources High Risk	Policy High Risk																		
Historical Data Availability Moderate Risk	Future Data Availability Moderate Risk	Data Quality No Known Issue																		
Statutory Context High Risk	Resources High Risk	Policy High Risk																		
Historical Data Availability No Known Issue	Future Data Availability No Known Issue	Data Quality No Known Issue																		
Statutory Context No Known Issue	Resources High Risk	Policy No Known Issue																		

Data Checkup

<p>Historical Data Availability</p> <p>Moderate Risk</p> <p>Question ACEI2 on being treated unfairly because of sexual orientation or gender identity was removed from the 2023 technical documentation original document and revised document, see page 15) and the 2023 data frequencies document original document and revised document, see page 7).</p>	<p>Future Data Availability</p> <p>Moderate Risk</p> <p>The scheduled October release of 2024 data was missed, likely due to the shutdown.</p>	<p>Data Quality</p> <p>No Known Issue</p>
<p>Statutory Context</p> <p>High Risk</p> <p>Statutory authorization is vague.</p>	<p>Resources</p> <p>High Risk</p> <p>HHS lost more than 10,000 employees before the shutdown. The shutdown appears to have resulted in additional cuts at HRSA.</p>	<p>Policy</p> <p>High Risk</p> <p>An Information Collection Request submitted on 4/2/2025 detailed that when asking about a child's experiences, "treated or judged unfairly because of their sexual orientation or gender identity" was removed as a response option due to EO 14168 Defending Women From Gender Ideology Extremism and Restoring Biological Truth to the Federal Government.</p>

Thank you for supporting federal data